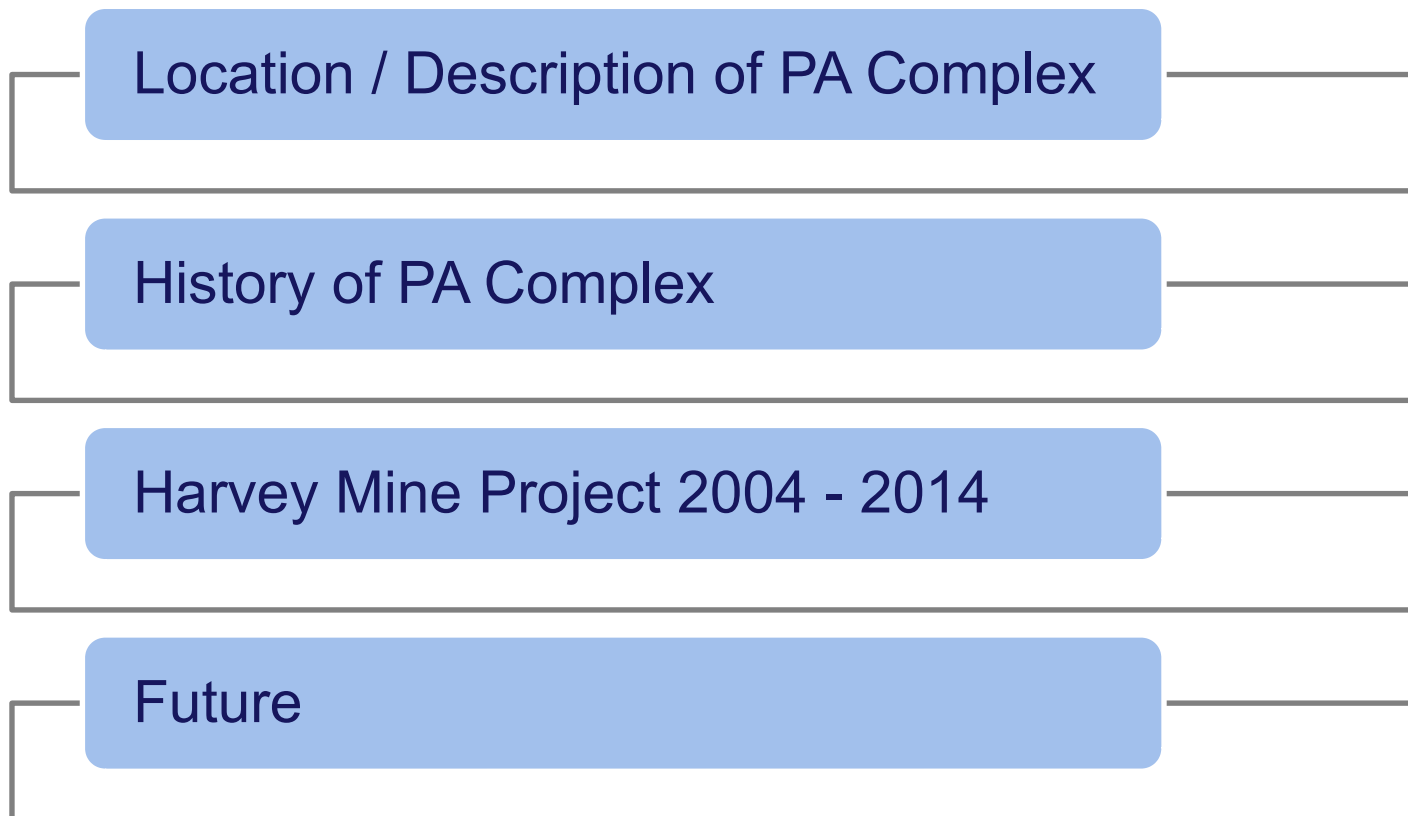





Blue Mountain Inc.
Photography: September 22, 2014

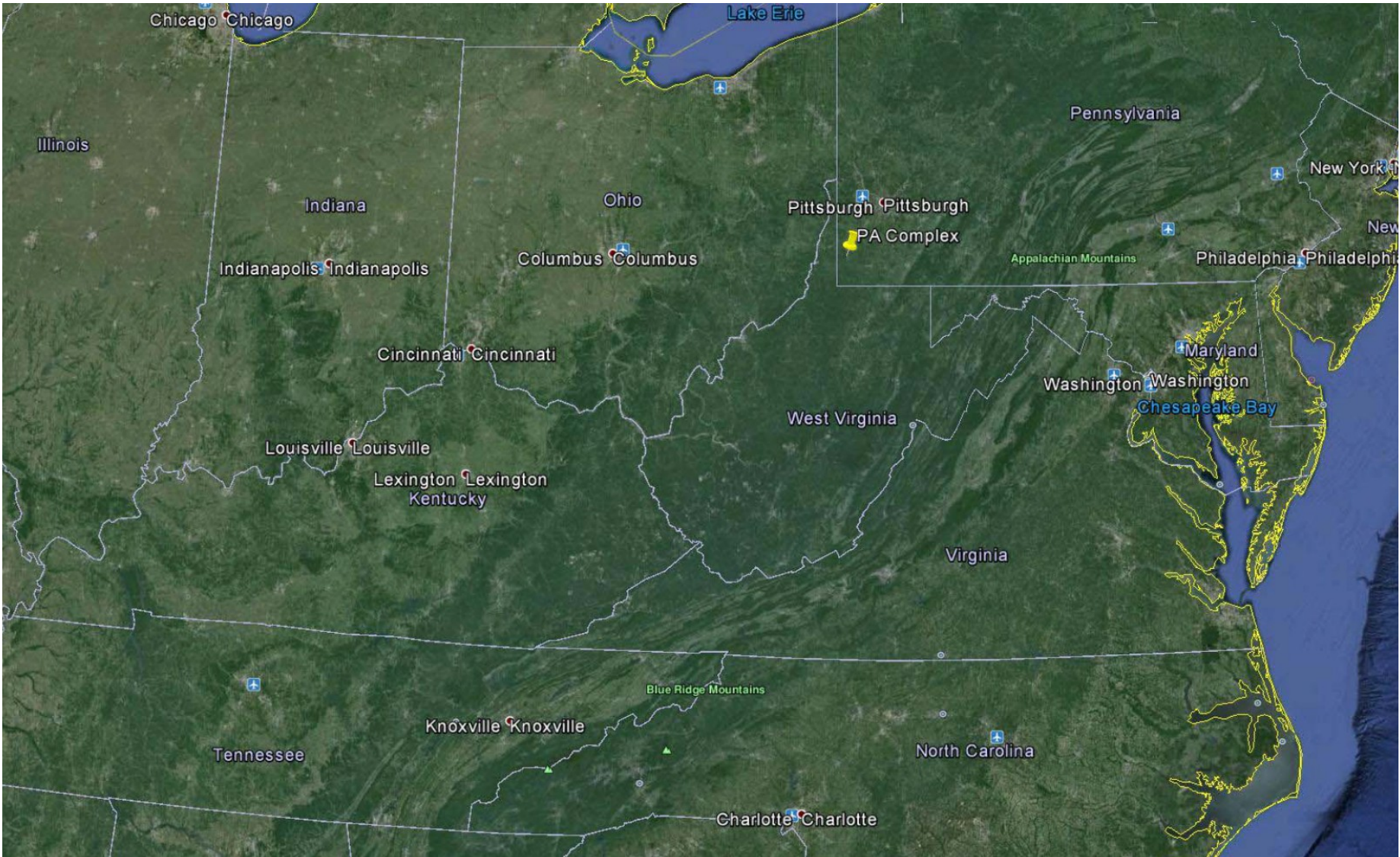
CONSOL Energy Integrates New Harvey Mine Into PA Complex

Agenda



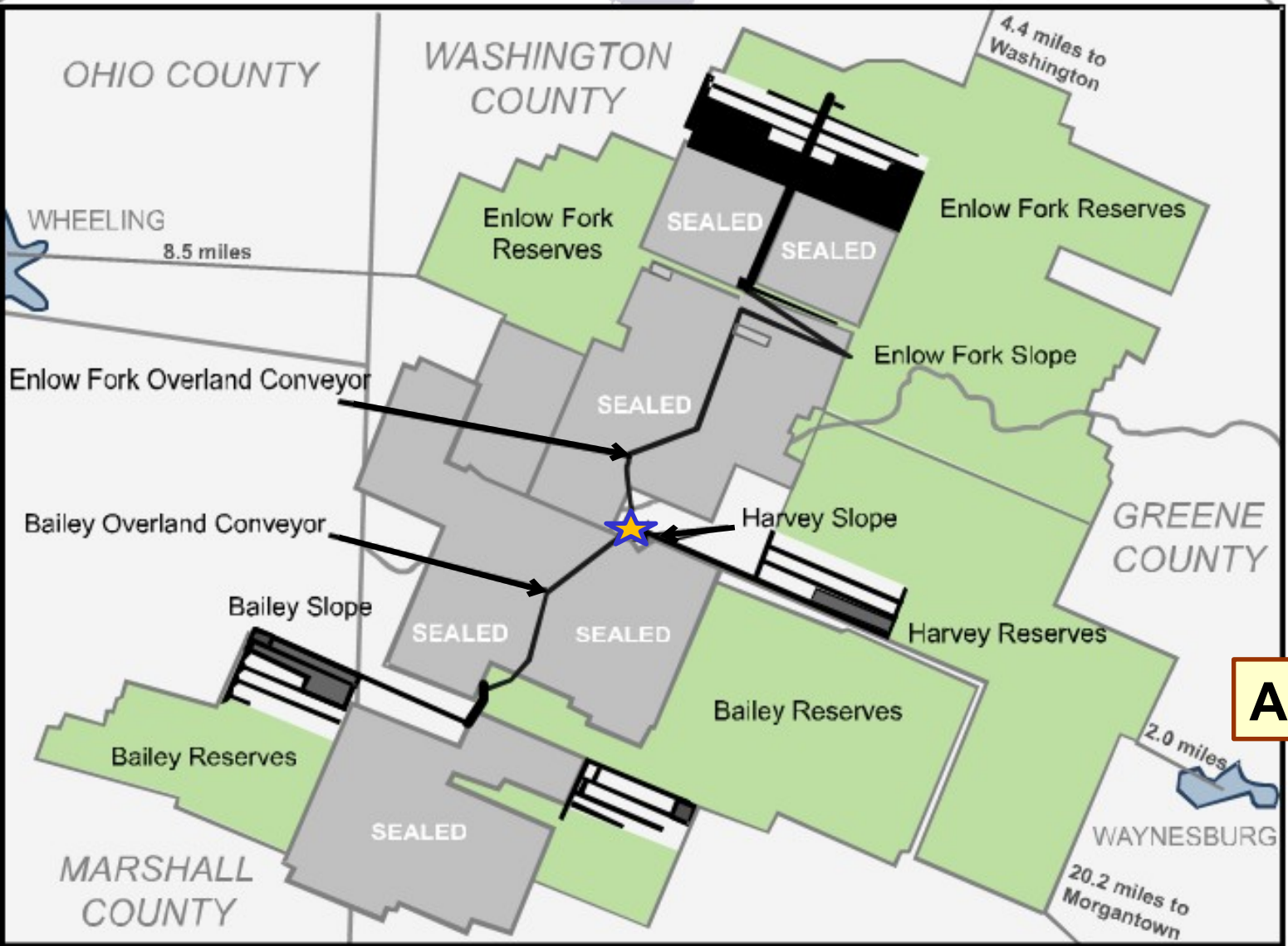
Flow of Presentation.

Location – High Level

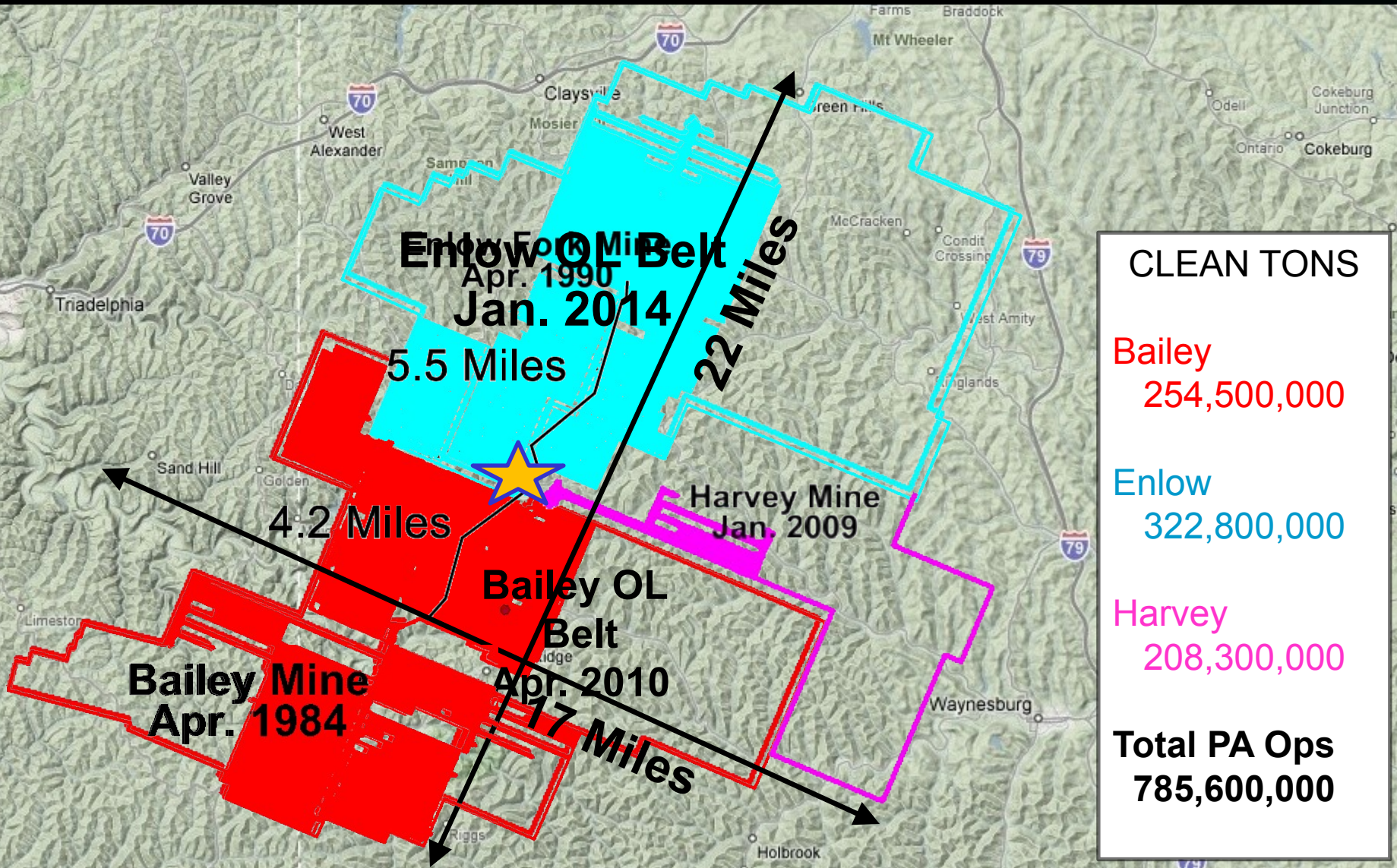


CONSOL's PA Complex is located 50 miles south of Pittsburgh PA.

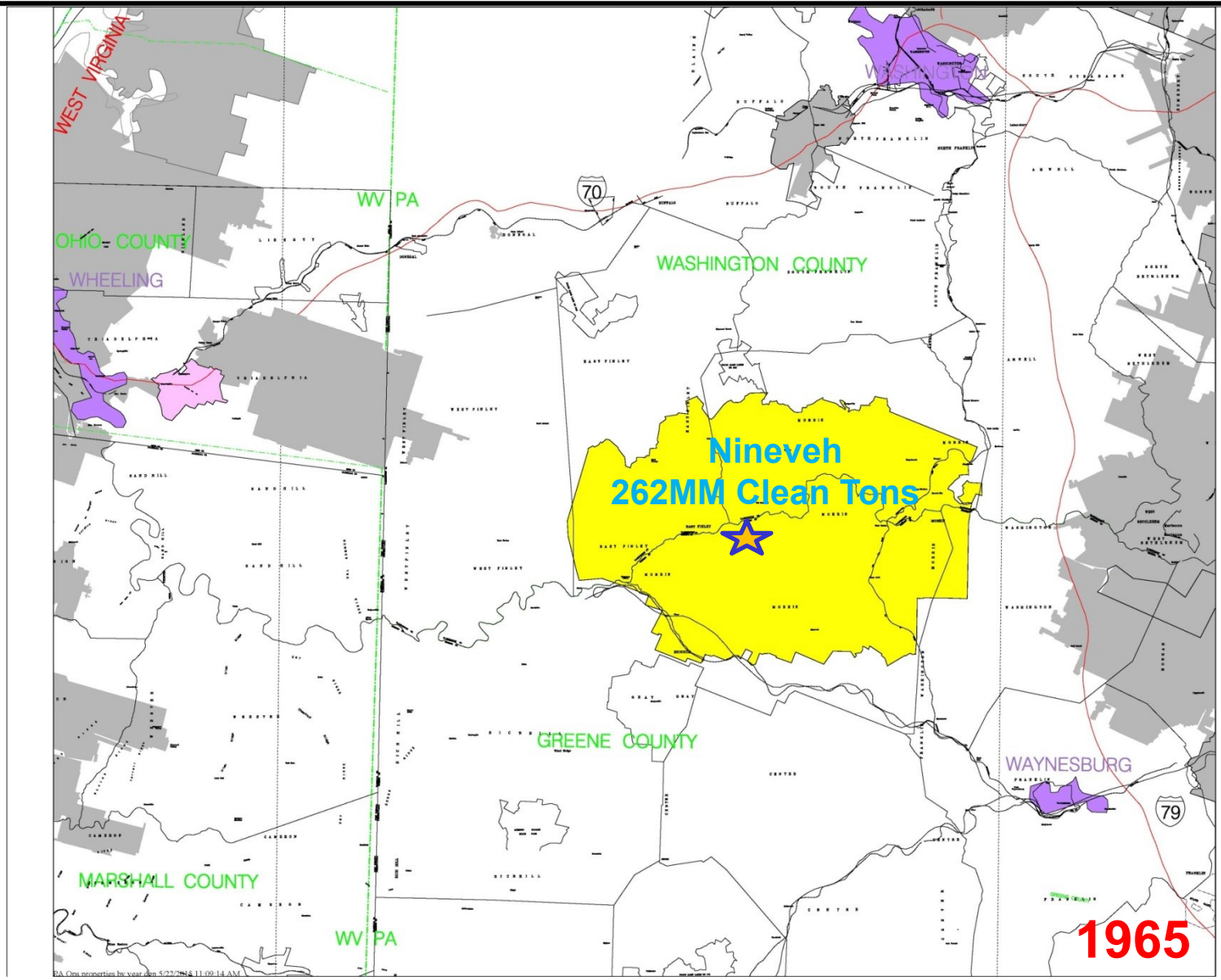
Location – Complex Footprint



Distances to nearby cities (Waynesburg, Washington, Wheeling, Morgantown).

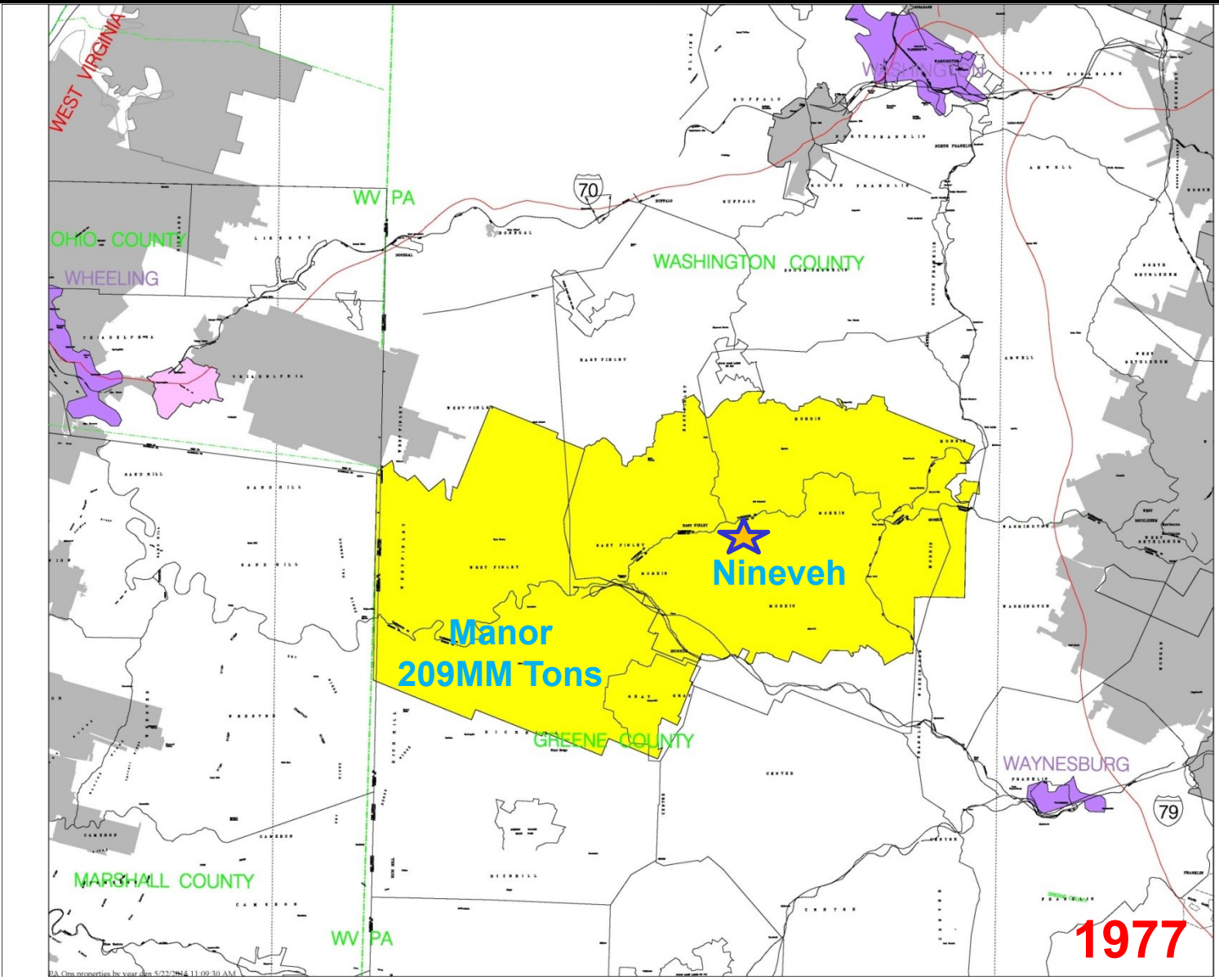


History – Reserves 1965 to Present



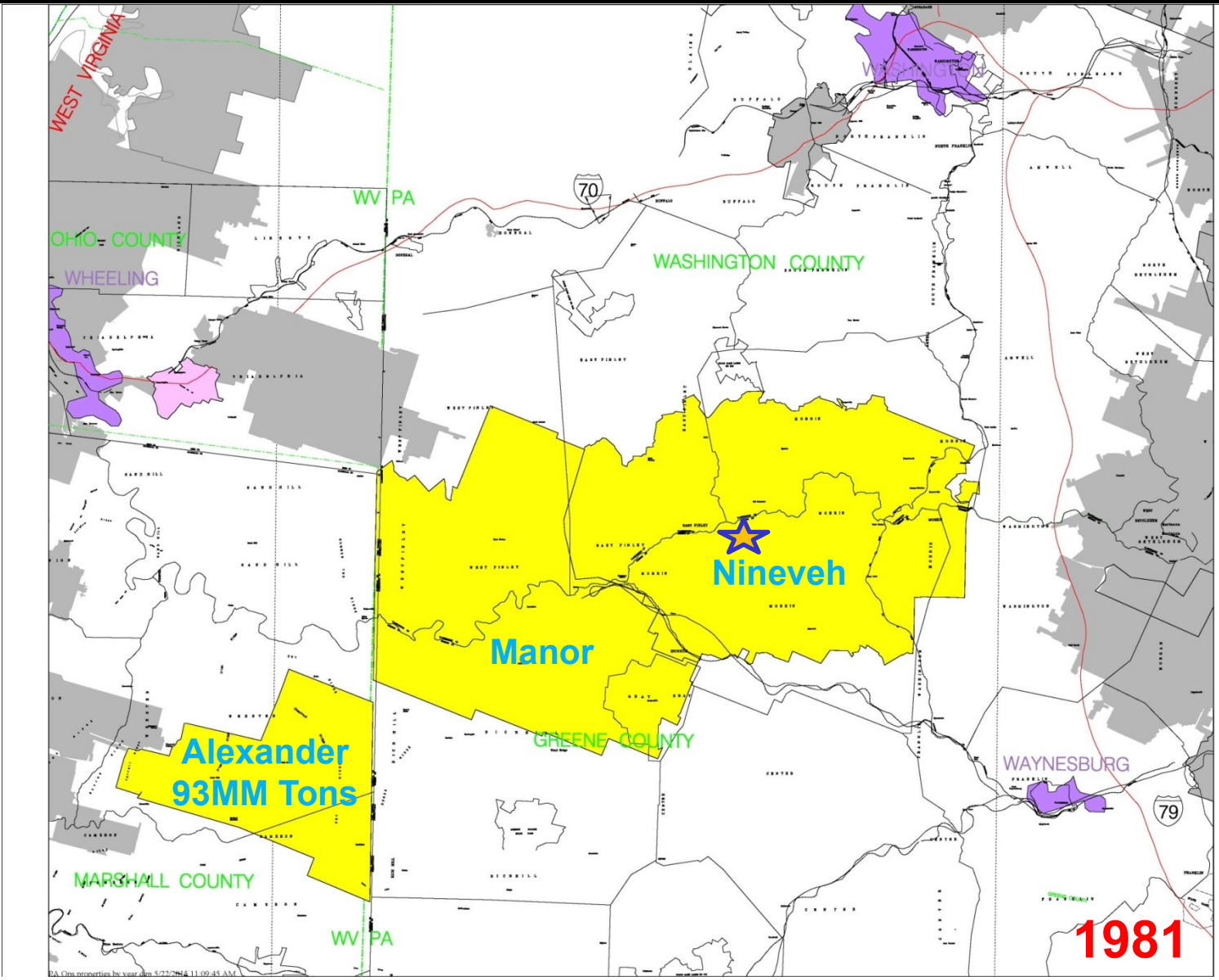
CONSOL Southwest PA Coal Reserves prior to 1965.

History – Reserves 1965 to Present



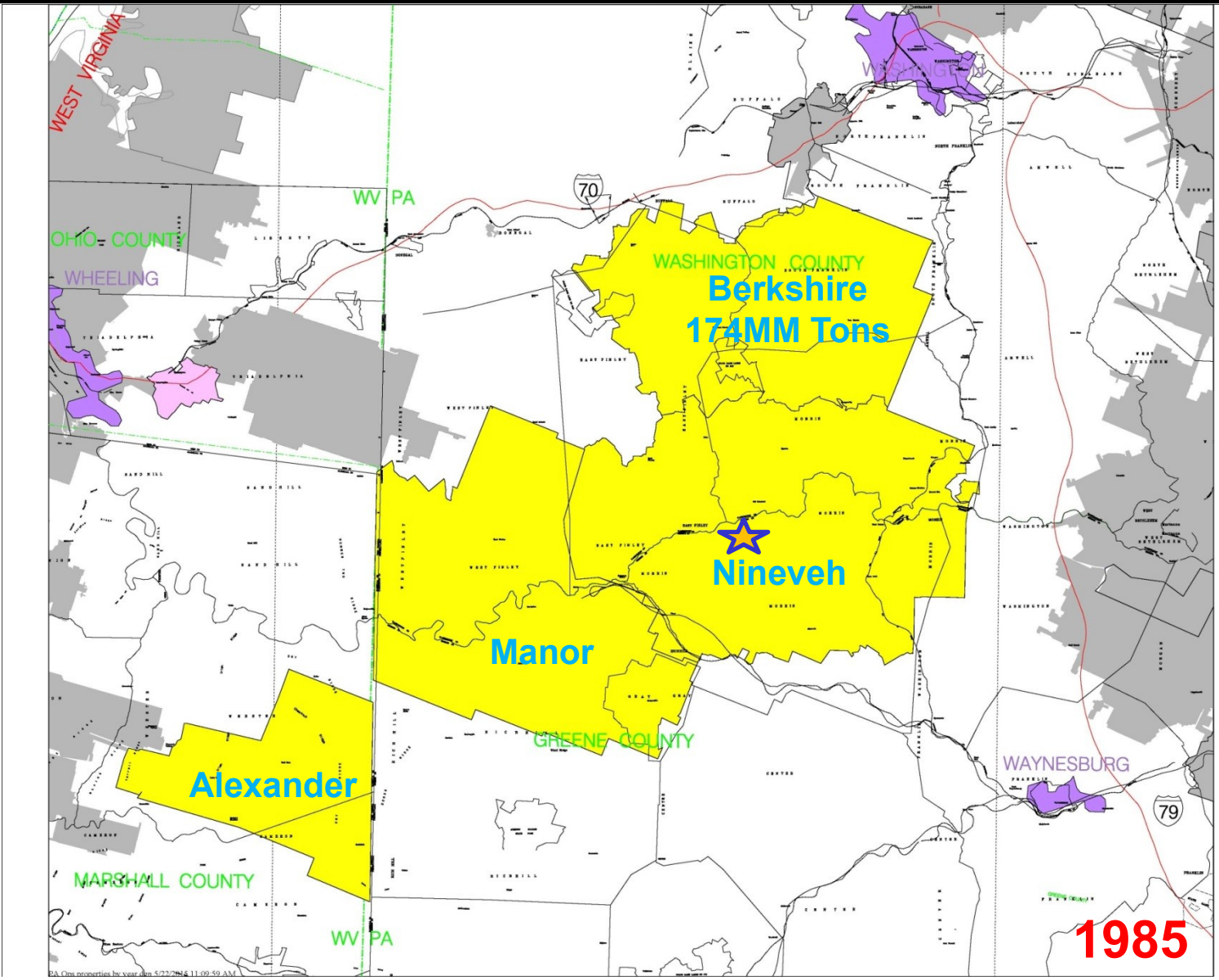
CONSOL Southwest PA Coal Reserves 1977 acquired Manor Reserve.

History – Reserves 1965 to Present



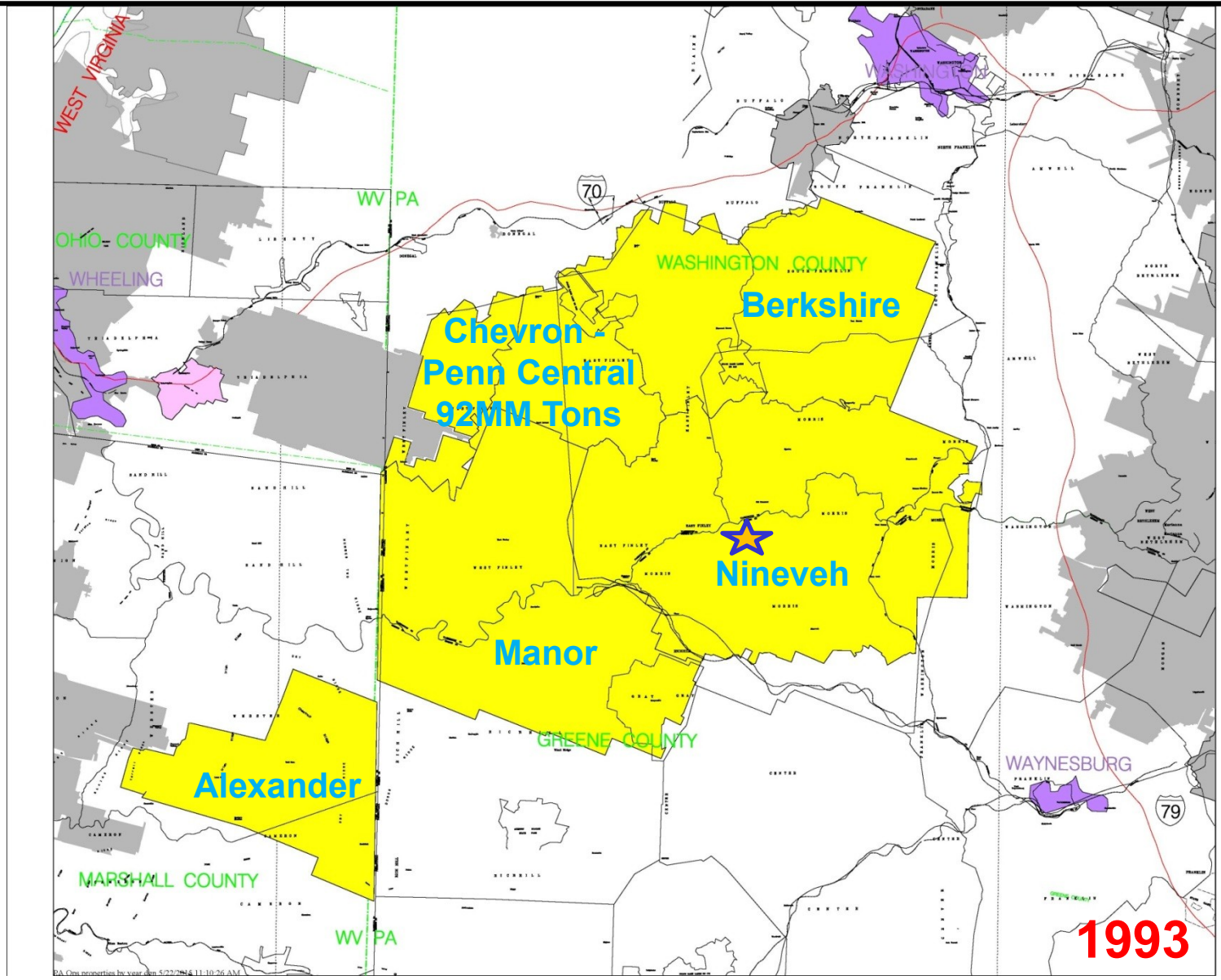
CONSOL Southwest PA Coal Reserves 1981 acquired Alexander Reserve.

History – Reserves 1965 to Present



CONSOL Southwest PA Coal Reserves 1985 acquired Berkshire Reserve.

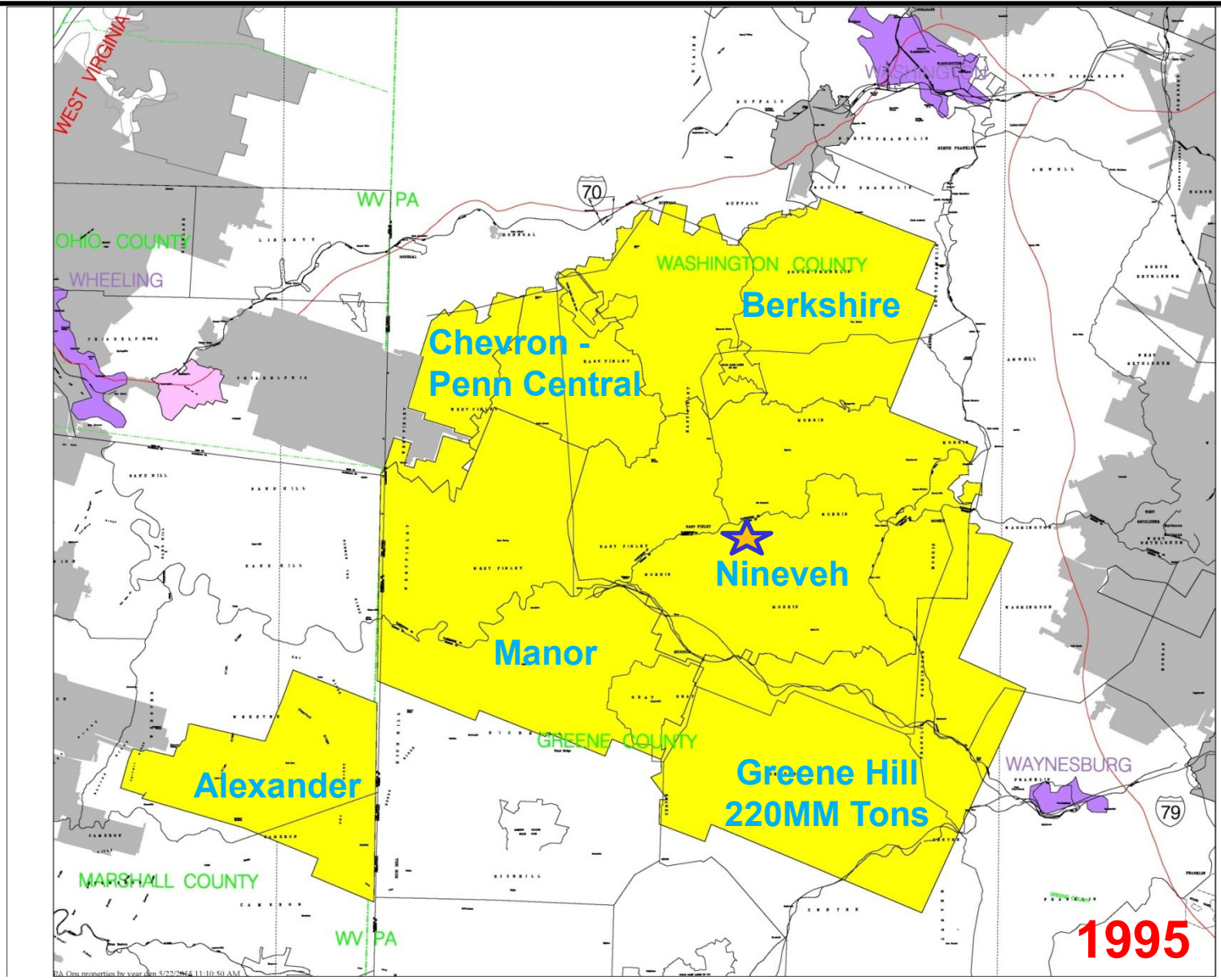
History – Reserves 1965 to Present



1993

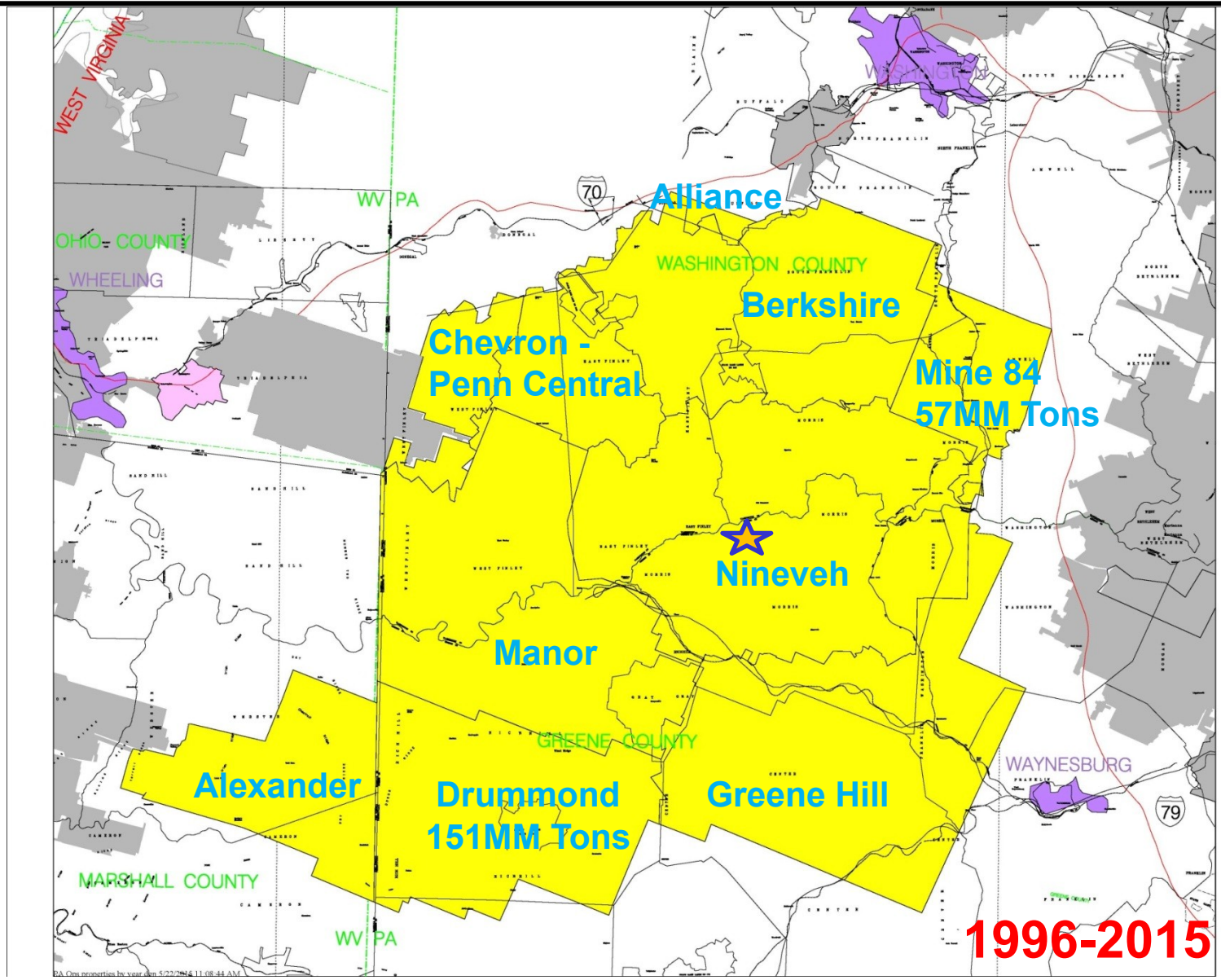
CONSOL Southwest PA Coal Reserves 1993 acquired Chevron-Penn Central Reserve.

History – Reserves 1965 to Present



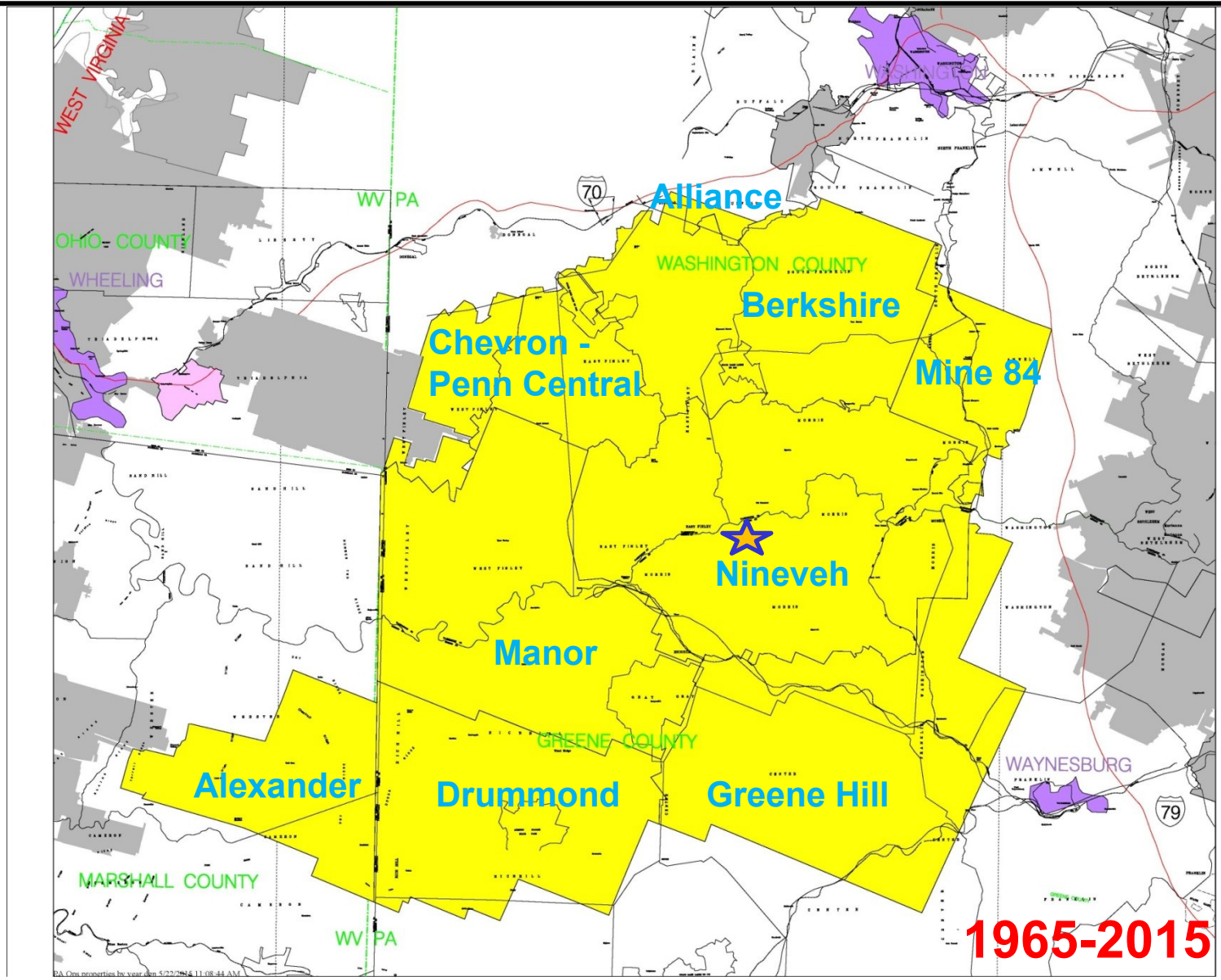
CONSOL Southwest PA Coal Reserves 1995 acquired Greene Hill Reserve.

History – Reserves 1965 to Present



CONSOL Southwest PA Coal Reserves 1996 - 2015.

History – Reserves 1965 to Present



1965-2015

CONSOL total 1.258B Clean Tons minus 472MM tons mined = 786MM tons Remaining.

History – Coal Processing



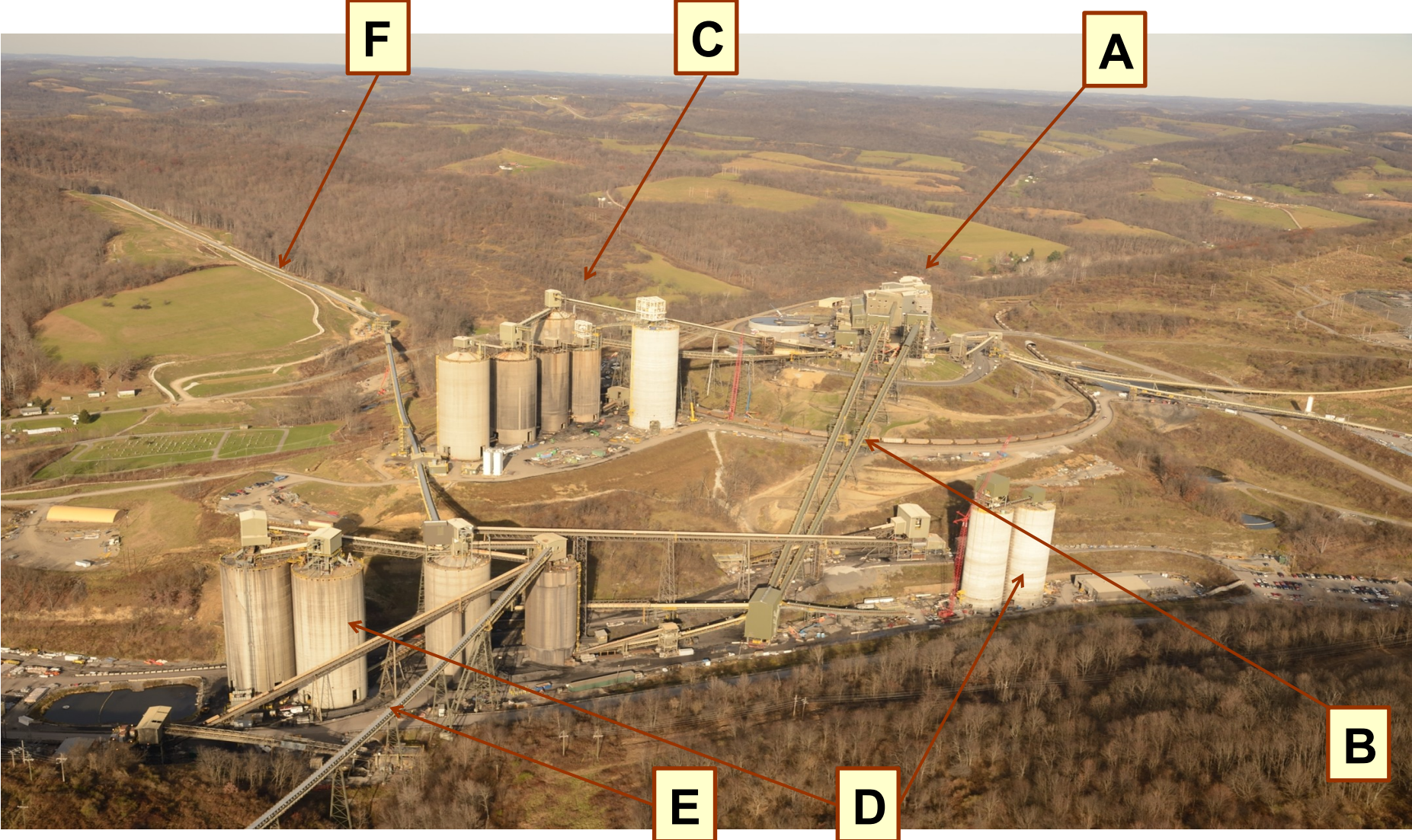
Bailey Preparation Plant 1984.

History – Coal Processing

<u>Plant Module</u>	<u>TPH</u>	<u>Annual Tons Shipped</u>
• 1984 Plant 1A	940	1,140,000
• 1991 Plant 2A & 2B	3140	11,400,000
• 1999 Plant 1B	5300	19,600,000
• 2004 Plant 2C	6300	20,800,000
• 2013 Harvey Upgrade	8200	26,100,000

Bailey Coal Processing Facility upgrades from 1984 through 2014.

History – Coal Processing



PA Complex Coal Processing Facility 2015.

Bailey Mine

- 1980 Original idea a 5 mine complex based on reserves
- 1981 Construction begins
- 1982 Construction work on Shaft, Slope, and Railroad Spur
- 1984 Development from Shaft to Slope Bottom connects Memorial Day
- 1985 First LW Panel begins, 1A Panel 600' wide and 7,000' long
- 1986 Second LW begins, 1B Panel 750' wide and 8,700' long

Enlow Fork Mine

- 1983 Construction work on Shaft and Slope begins
- 1990 Three entries developed off Bailey Slope Bottom Area
- 1991 First LW Panel begins, 1A Panel 750' wide and 9,000' long
- 1992 Second LW begins, 750' wide and 9,000' long

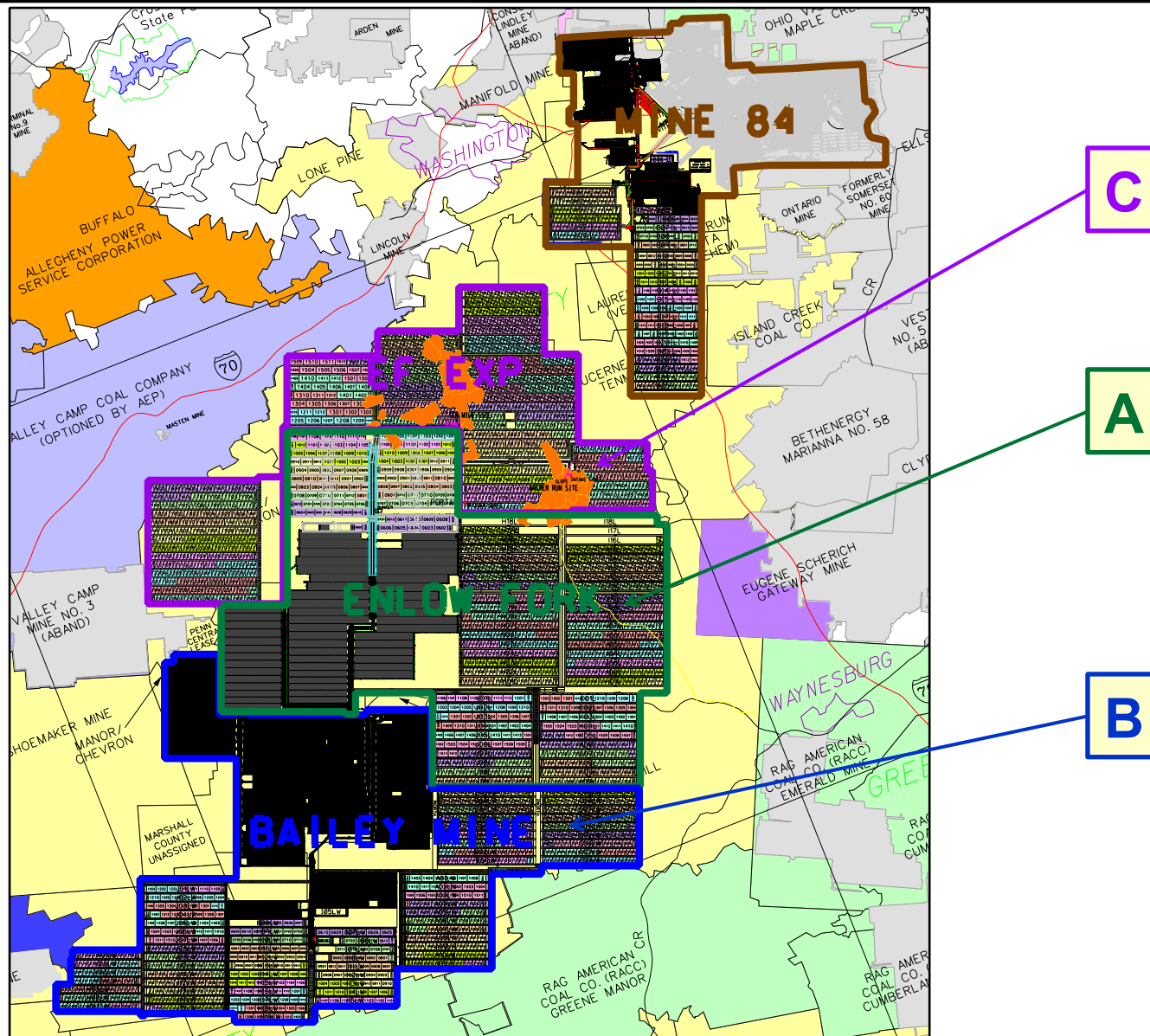
History of Bailey Mine and Enlow Fork Mine.

History – Bailey Life of Mine Haulage



Bailey Mine main line haulage roof and rib deterioration over 20 years.

History – Initial New Mine Concept



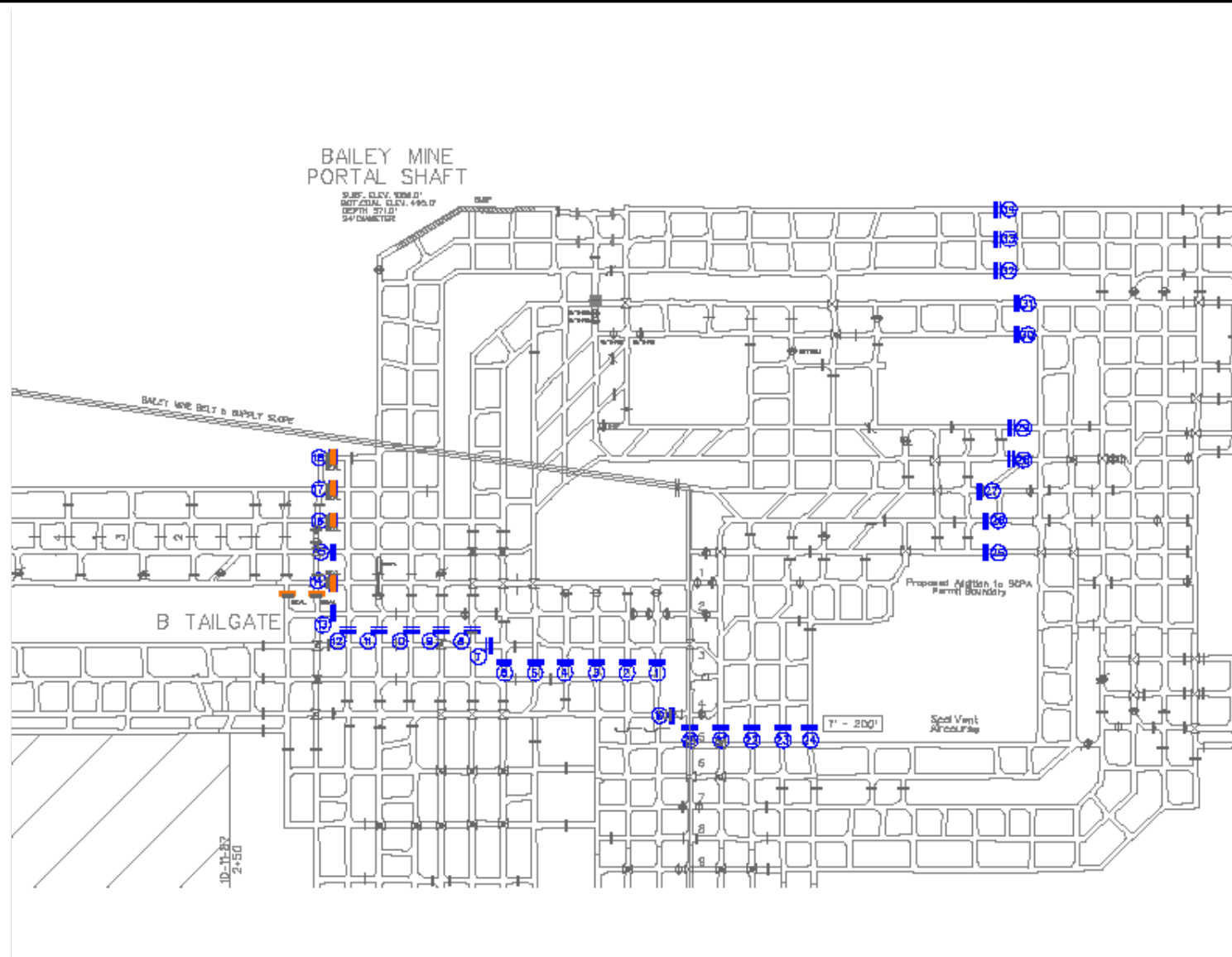
Originally planned to mine Enlow Fork Expansion with its own prep plant in 2005.

History – Bailey New Life of Mine Haulage



Bailey Mine Slope and Overland Conveyor Project was started 2005 and completed 2010.

Harvey Mine Project – Separation From Bailey



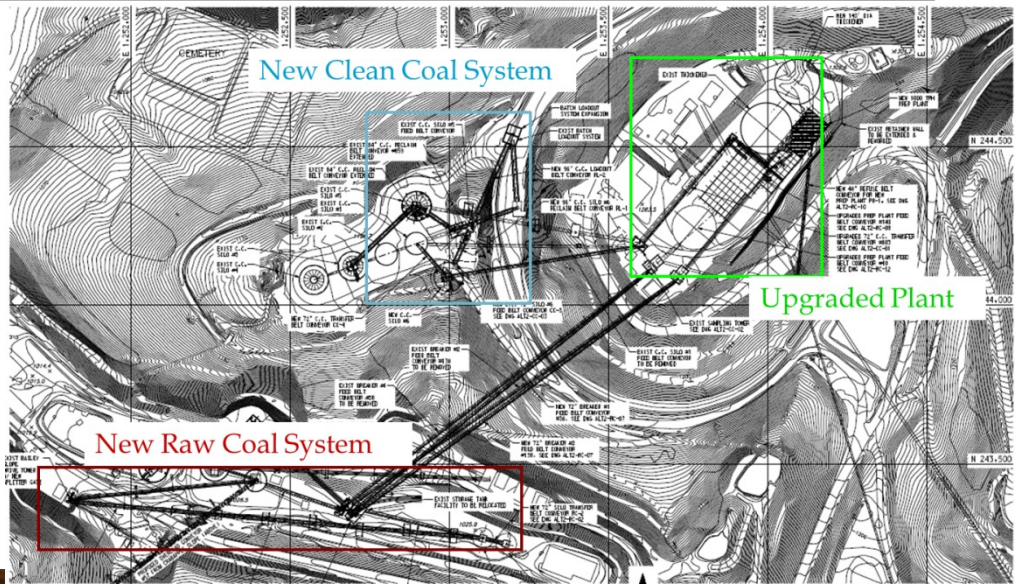
Sealing project to separate Bailey Mine from Harvey Mine (34 Seals).

Harvey Mine Project – Separation From Bailey



5 Solid Block Layers, 3 MICON Block Layers, 7.2 ft Thick Overall.

Harvey Mine Project – Increased Capacity at Plant



Upgrades to Prep Plant including New Dual Batch Train Load out Facility capable of loading 9,000 TPH and New 8,000' Rail Siding.

Harvey Mine Project – 30 Year Design

A

B



Harvey Mine life of mine main line haulage ground control.

Harvey Mine Project – 30 Year Design



X-Cut Track to Belt



Track Tight Side



Belt Walk Side



40T
RocProps

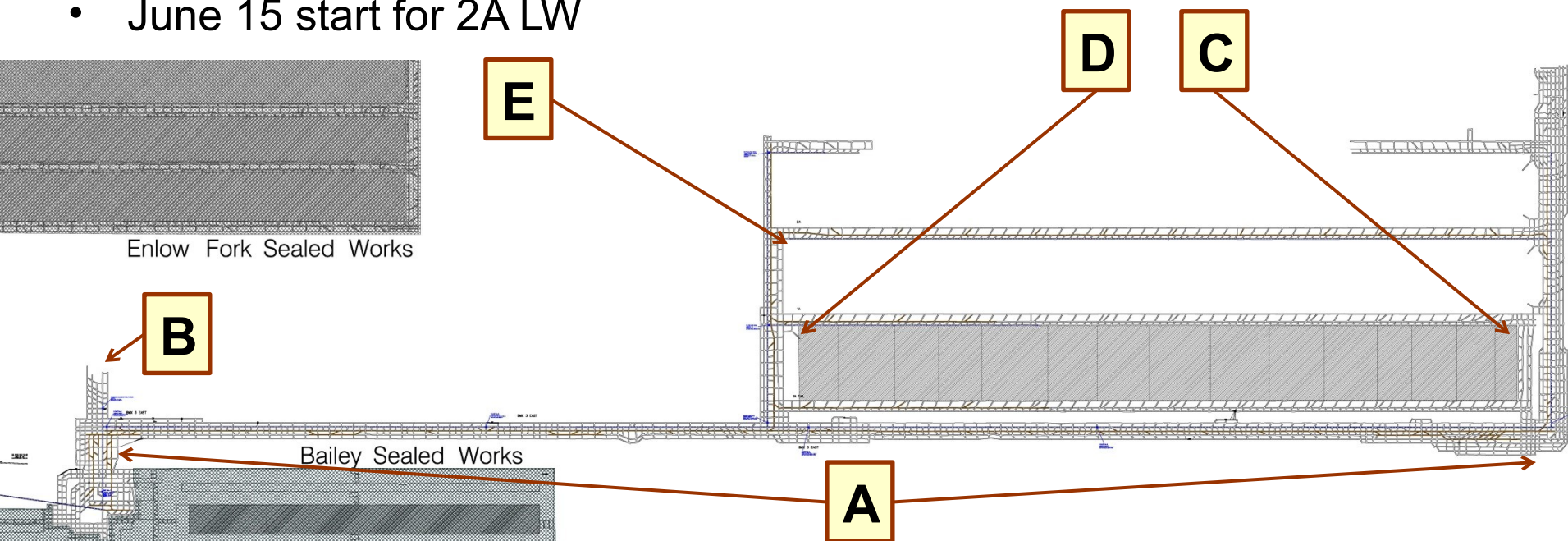
Belt Tight Side



Harvey Mine floor to roof support in main line haulage cross-cuts.

Harvey Mine

- January 2009 started CM Development off Bailey Mine Bottom
- Q3 2010 Sealing Complete from Bailey Mine
- 30,000' or 5.8 Miles of main line haulage development to Harvey Portal
- LW Panel Dimensions 1,500' wide (262 shields) by 15,000' long
- Mined 1A LW Panel East to West while continuing Mains development
- Completed 1A LW Panel June 1
- June 15 start for 2A LW



Current Harvey Mine Map following completion of first LW Panel 1A.

Harvey Mine Project – Longwall Production



New Longwall System in Operation.

Harvey Mine Project – Longwall Production



New Longwall System in Operation.

Harvey Mine Project – Longwall Production



New Longwall System in Operation.

Harvey Mine Project – Longwall Production



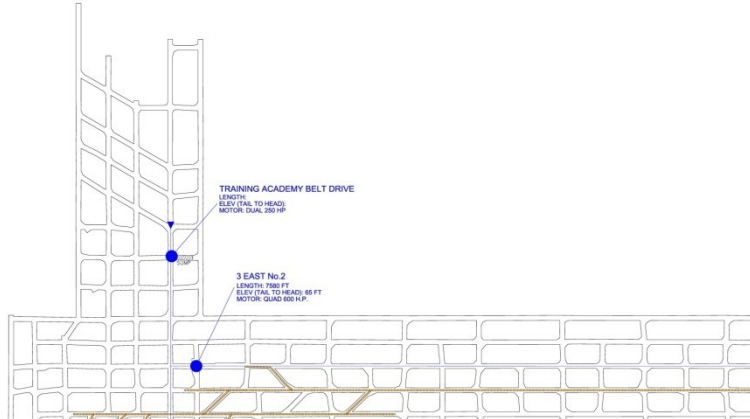
New Longwall System in Operation.

Harvey Mine Project – New Mine Portal



June 24 2014 was the Harvey Mine dedication at the new Patterson Creek Portal.

Future – Underground Training Academy



Underground Training Academy located off original Bailey Mine Portal Bottom.

Future – Enlow Fork New Life Of Mine Haulage



Blue Mountain Inc.
Photography: May 22, 2015

New Enlow Fork Slope and Overland Conveyor in service 2014 Q1.

Future – Increased Capacity Potential



nd Longwall at Harvey Mine would increase annual production capacity from PA Complex.

Questions?



CONSOL Energy Integrates New Harvey Mine Into PA Complex